



Plumbing & Drainage



# SOIL & WASTE

PUSH FIT AND SOLVENT WELD SYSTEMS





## QUALITY SOIL & WASTE SYSTEMS

When you select a soil or waste system, you need to be sure of its pedigree, convinced of its ability to perform and confident of enduring quality. The excellence of Brett Martin Soil & Waste Systems is recognised through the company's achievement of BS EN 9001:2008. You can be confident, that as a BSI Registered company our Quality Assurance programme guarantees that Brett Martin Soil & Waste Systems are first class products.



Plumbing & Drainage



## PUSH-FIT OR SOLVENT WELD

Brett Martin's Soil & Waste ranges include both Push-fit and Solvent Weld options in a variety of dimensions and a comprehensive range of components for the complete assembly of soil ventilation stacks on domestic, commercial and industrial buildings.

A comprehensive range of polypropylene traps and adaptors facilitate connection of any appliance and an Overflow System in PVC-C is also available, completing the package offered.

Brett Martin Brett Soil & Waste Systems are complemented by Brett Martin Underground Drain in 110 and 160mm diameters manufactured and kitemarked to BS EN 1401, and Brett Martin Sewer systems in diameters up to 400mm manufactured to BS EN 1401.

### Flexible Plumbing Systems

Brett Martin also offers the Plumbfit flexible plumbing system for hot and cold water installations as well as a range of Plasson MDPE potable water pipe and a comprehensive range of fittings in sizes 20mm - 63mm.

## CONTENTS

### Soil

Push-fit Soil	Page 4
Solvent Weld Soil	Page 5
Access Fittings	Page 6

### Waste

Push-fit Waste	Page 7
Solvent Weld Waste	Page 8
Compression Waste	Page 8
Universal Overflow	Page 9
Traps	Page 9

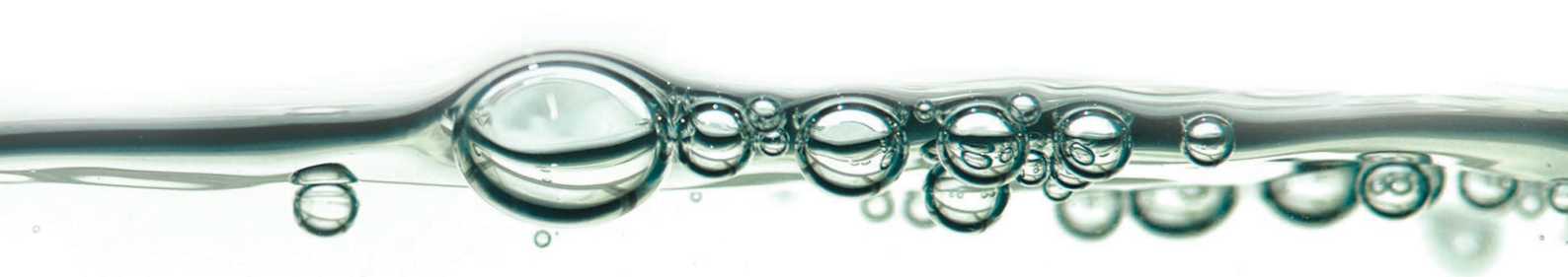
### Water Supply & Piping Systems

Plasson MDPE Water Supply	Page 10
Plumbfit Polybutylene Piping System	Page 11





# SOIL



## PUSH-FIT SOIL

Pipe and Fittings - 82.4mm, 110mm, 160mm

Brett Martin Push-fit Soil is a highly adaptable 82.4mm, 110mm and 160mm systems. Long lasting rubber seals, retained by strong snap caps, gives the convenience of push-fit installation plus prolonged reliability. The systems are manufactured and kitemarked to BS EN 1329 and are fully compatible with other systems. The Push-fit Soil system integrates with Brett Martin Push-fit Waste and Underground Drainage systems.

### FEATURES INCLUDE

- Dry fix system which 'push-fits' together
- Available in 82.4mm, 110mm and 160mm systems
- Compatible with any other 110mm and 160mm above ground drainage system
- Twist-and-lock access fittings



### Colour Options

- Grey
- White
- Black
- Brown
- Cast Iron Style

### COMPONENTS



Socketed Soil Pipe



92 1/2° D/S Branch without Bosses



Access Plug



Strap on Boss



Air Admittance Valve



Plumbing & Drainage



KM 504441

SOIL								
Description	*	BS EN No.	mm	GO	G	W	B	Br
Push-Fit	U	BS EN 1329	82.4		●			
Push-Fit	U	BS EN 1329	110		●	●	●	●
Push-Fit	U	BS EN 1329	160		●		●	
Solvent Weld	U	BS EN 1329	82.4	●			●	
Solvent Weld	U	BS EN 1329	110	●		●	●	

M - MuPVC P - Polypropylene U-PVCu





## Product Spotlight

### CAST IRON STYLE SOIL SYSTEM

The Brett Martin Soil range includes a comprehensive 110mm Cast Iron Style Soil System with a realistic cast iron finish. Designed to incorporate traditional cast iron detailing with all the benefits of a plastic system, the Cast Iron Style Soil System completes the range providing a cost effective alternative to Cast Iron in renovation or new build projects.



## SOLVENT WELD SOIL

### Pipe and Fittings - 82.4mm, 110mm

Designed for solvent weld joint, this soil assembly is available in 82.4mm and 110mm diameter systems. Manufactured and kitemarked to BS EN 1329, the Solvent Weld Soil system is fully compatible with other systems and integrates with Brett Martin Solvent Weld Waste and Underground drainage systems.

#### FEATURES INCLUDE

- Complete 82.4mm and 110mm system
- Designed for jointing with solvent cement
- Twist-and-lock access fittings



#### Colour Options

● Olive Grey   ○ White   ● Black

#### COMPONENTS



Plain Ended Soil Pipe



D/S Branch without Bosses



Short Boss



135° Double Solvent Weld Socket Bend



Strap on Boss



# ACCESS FITTINGS

## Twist-and-Lock Access Fittings - 110mm, 160mm

Brett Martin Access Fittings are the most hassle free fitting available. The new Brett Martin fittings are more mechanically advanced. The insert has been considerably designed with locators to ensure it fits snugly into the correct place. The design of the cap itself is ingenious. A unique quarter turn twist-and-lock feature means the cap is quick and easy to close and re-open and extremely difficult to cross thread.

The seal has been carefully located to ensure that sealing the product is not dependent on the cap face which reduces the risk of leakage and means the cap is easier to dismantle for access. The greater opening size at 103mm, allows simple rodding access to remove any blockages. Once the blockage is cleared the insert, seal and cap are easy to pop back into place.

All fittings are manufactured from PP and PVC components, which are 100% recyclable.

## FEATURES INCLUDE

- Push-fit and Solvent Weld jointing options
- Easy to handle and locate insert
- Simple quarter turn twist n' lock cap
- Excellent sealing
- Larger opening for access

## Colour Options

Push-fit:  Grey  White  Black  Brown  
 Cast Iron Style

Solvent Weld:  Grey Olive  Black

## COMPONENTS - PUSH FIT



110mm Single Socket Access Pipe



110mm 92 1/2° Single Socket Access Bend



160mm Single Socket Access Pipe



110mm 92 1/2° Double Socket Access Branch

## COMPONENTS - SOLVENT WELD



110mm Double SW Socket Access Pipe



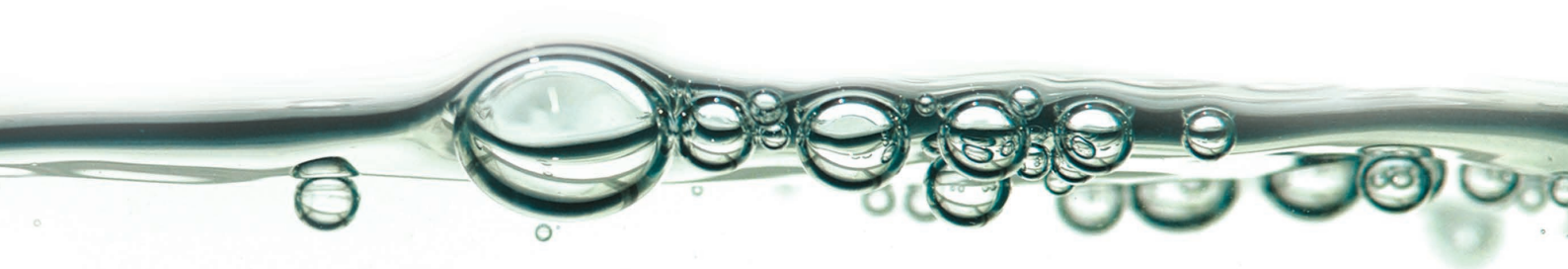
110mm 92 1/2° Double SW Socket Access Bend



110mm 92 1/2° Triple SW Socket Access Branch



# WASTE



## PUSH-FIT WASTE

### Pipe & Fittings - 32mm, 40mm, 50mm

Brett Martin Push-fit Waste systems, manufactured in polypropylene, are available in 32mm, 40mm and 50mm diameters. These systems are cost effective, easy to install and ideal for residential and commercial applications. Captive ring seal push-fit joints ensure ease of assembly and a completely watertight connection that can accommodate thermal movement. The Push-fit Waste system integrates with Brett Martin Push-fit Soil systems.

#### FEATURES INCLUDE

- Systems available in 32mm, 40mm and 50mm diameters
- Easy to install making it ideal for installation where access is limited
- Dry fix captive ring sealed push-fit joints produce watertight connections which can accommodate thermal movement



#### Colour Options

● Grey ○ White ● Black ● Brown

#### COMPONENTS



Waste Pipe



Air Admittance Valve



92½° Push-fit Swept Bend



92½° Push-fit Swept Tee



Access Plug



Plumbing & Drainage

WASTE								
Description	*	BS EN No.	mm	GO	G	W	B	Br
Solvent Weld	M	BS EN 1566	32, 40	●		●	●	●
Solvent Weld	M	BS EN 1566	50	●		●	●	●
Push-Fit	P	-	32, 40, 50		●	●	●	●
Overflow System	M	-	21.5		●	●		
Traps	P	BS EN 274	32, 40			●		
Compression	P	-	32, 40			●		

M - MuPVC P - Polypropylene U-PVCu



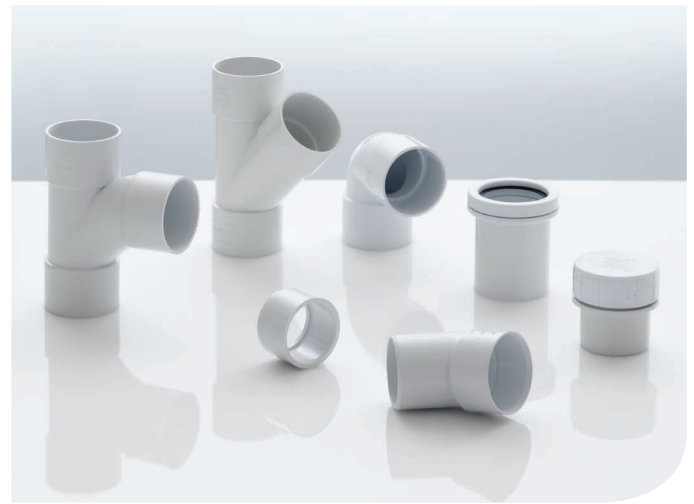
# SOLVENT WELD WASTE

## Pipe and Fittings – 32mm, 40mm, 50mm

Brett Martin Solvent Weld Waste systems, manufactured in modified PVCu and conforming to BS EN 1566 are extremely durable and designed to provide secure solvent weld jointing. PVC-C provides superior fire performance and its high softening point means it is not adversely affected by very hot water discharges over long periods. Solvent Weld Waste systems are available in 32mm, 40mm and 50mm diameters.

### FEATURES INCLUDE

- Systems available in 32mm, 40mm and 50mm
- PVC-C exhibits superior fire performance to other thermoplastics and its high softening point means it is not adversely affected by very hot water discharges over prolonged periods



### Colour Options

- ☒ Olive Grey
 ☐ White
 ☒ Black
 ☒ Brown

### COMPONENTS



Waste Pipe



92½° Push-fit Swept Bend



92½° Push-fit Swept Tee



Access Plug



Air Admittance Valve

# COMPRESSION WASTE

## 32mm, 40mm

Brett Martin Compression Waste systems are produced in white polypropylene, in 32mm and 40mm diameters. Effective sealing is achieved by tightening of the threaded seal retaining rings. Compression Waste Systems are capable of taking high temperature discharges, and thermal movement allowances are accommodated in the design. It is often used for refurbishment or extending existing waste systems.

### FEATURES INCLUDE

- Manufactured in polypropylene
- Threaded seal retaining rings provide superior sealing
- Available in 32mm and 40mm dia.



### Colour Options

- ☐ White

### COMPONENTS



90° Compression Knuckle Bend



92½° Swept Tee



Compression Straight Connector



# UNIVERSAL OVERFLOW

## 21.5mm

Brett Martin Overflow System, manufactured in white and grey PVC-C, can be push-fit assembled or solvent weld jointed. Suitable for both hot and cold water applications, this system is 21.5mm in diameter.

### FEATURES INCLUDE

- Manufactured in PVC-C
- Can be push-fit assembled or solvent weld jointed
- Can be used in hot and cold water applications
- 21.5mm dia. System



Colour Options



Grey



White

### COMPONENTS



90° Knuckle Bend



90° Tee



Straight Compression  
Socket Tank Connector

# TRAPS

## 32mm, 40mm

Brett Martin offer a complete range of universal compression joint traps in 32mm and 40mm diameters, manufactured in Polypropylene and conforming to BS EN 274. These include Tubular "P" and "S" traps, bottle traps, as well as traps for specific appliances such as baths and washing machines. All have compression joints for ease of installation.

### FEATURES INCLUDE

- Manufactured in white polypropylene
- Allow connection of any appliance
- Available in 32mm and 40mm dia.
- Compression joints



Colour Options



White

### COMPONENTS



Bottle



P Trap



S Trap



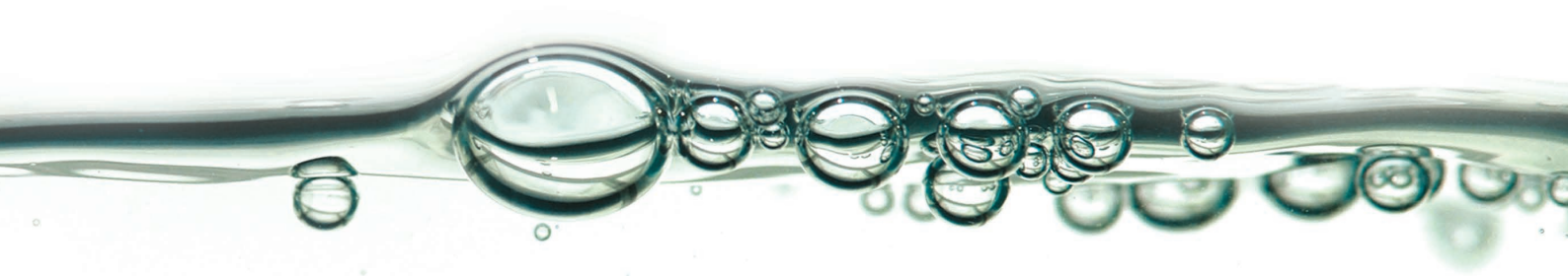
Bath and Shower Trap



Washing Machine Trap



# WATER SUPPLY & PIPING SYSTEMS



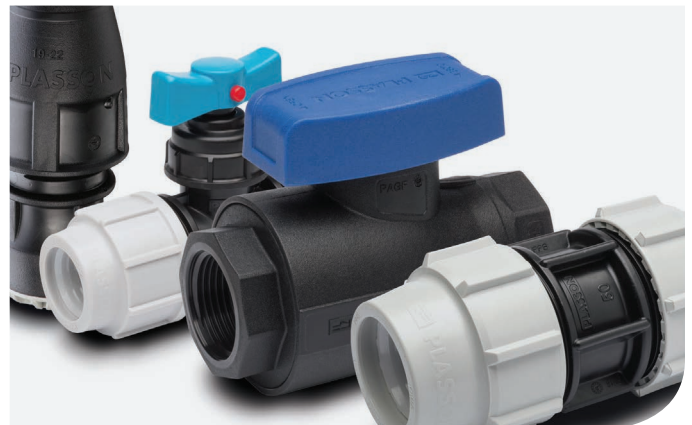
## PLASSON MDPE WATER SUPPLY

**Pipe and Fittings - 20mm, 32mm, 50mm, 63mm**

Brett Martin offers the market leading Plasson Water Supply range of fittings to complement the blue 20mm – 63mm dia MDPE water pipe in 25m, 50m, 100m and 150m coils. Manufactured from virgin Polypropylene for immense impact strength and stress resistance, Plasson compression fittings are designed for connection to many pipe types and materials providing compatibility with existing systems.

### FEATURES INCLUDE

- Flexible MDPE pipe coils, 20mm-63mm dia, in 25m, 50m, 100m and 150m lengths
- Extensive range of types, sizes and patterns of fitting with many unique solutions to everyday problems
- The 'Plass4' Universal Adaptors for making an immediate joint to existing copper/ lead/ galvanized steel/ PVCu or Polyethylene pipe
- A range of valves and threaded products to provide a total solution to your network needs
- A Stop Tap Chamber assembly (Does not include Stop Tap)
- The Plasson compression fittings are approved by all European and global agencies for use on potable water
- The range is simple to use with the captive 'O' ring seal provides lifetime protection against leakage and requires no nut tightening to achieve a seal



### COMPONENTS



Universal Coupler



90° Tee



90° Elbow



Metric to Imperial Coupler

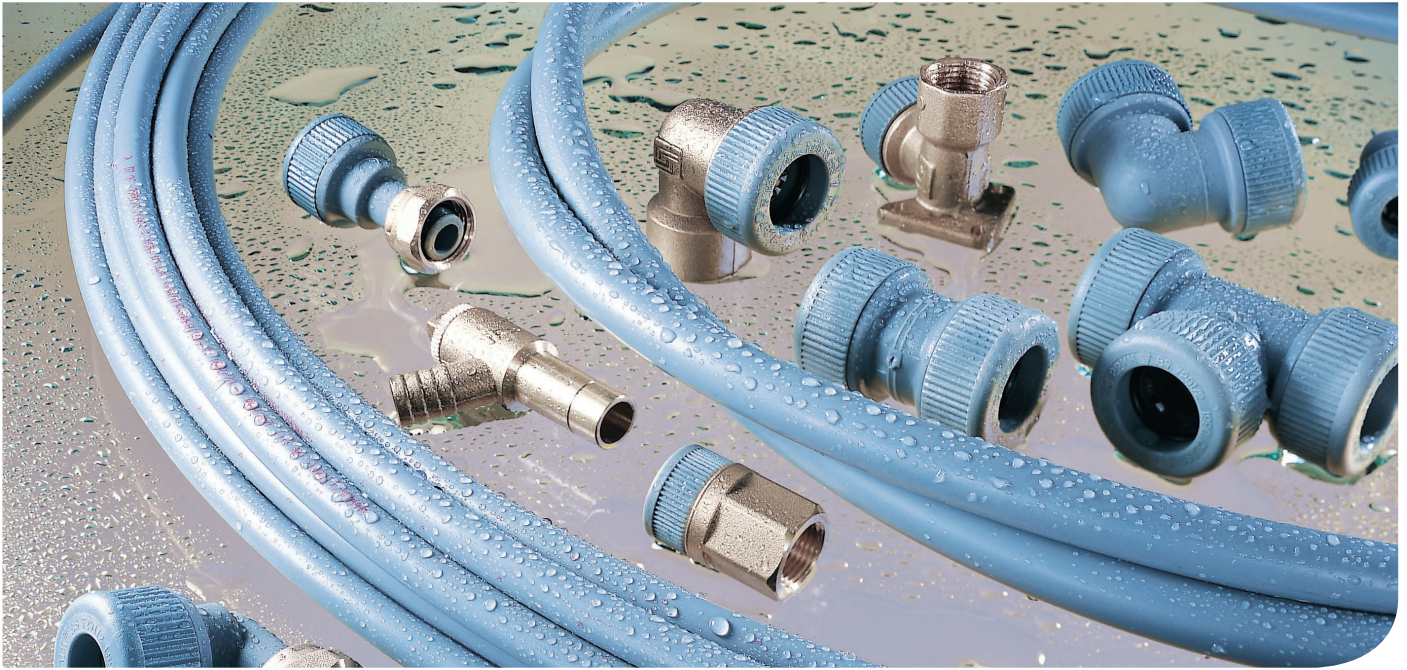


Class C Low Density Adaptor



Plumbing & Drainage





# PLUMBFIT POLYBUTYLENE PIPING SYSTEM

Pipe and Fittings - 10mm, 15mm, 22mm, 28mm

Plumbfit is a flexible plumbing system, tailor-made for the professional plumbing and heating installer who wants a high quality system that is simple to fit, durable in use, yet competitively priced. The system offers a comprehensive choice of pipe and fittings in 10mm, 15mm, 22mm and 28mm, suitable for all hot and cold plumbing and central heating systems. It can be used in both sealed and open vented systems and has been designed to withstand constant pressure at high temperatures.

Plumbfit's combination of low thermal conductivity and high corrosion resistance makes it ideal for use in central heating systems. The flexible nature of the pipe allows a 'cabling' option, which speeds up pipework routing significantly. It will also 'cable' through joists easily, thus dispensing with the time consuming task of pipe bending and joint compressing in confined areas.

Plumbfit piping is so flexible that it can be bent to 12 times its diameter without the need for a joint. Moreover, when you unravel a coil, the piping will straighten and lay flat immediately. Few tools are needed to complete even the most complex pipework systems. Joints are push-fit for simplicity and speed of installation.

## FEATURES INCLUDE

- Comprehensive range of pipe and fittings in 10mm, 15mm, 22mm, 28mm
- Piping straightens immediately when uncoiled
- Extremely durable in use - corrosion and impact resistant
- Can be used in both hard and soft water areas
- Pipe and fittings can be painted in non-cellulose paint
- 25 year guarantee
- Fast simple installation with 'cabling' option and push-fit jointing - cuts time and costs dramatically
- Can be used with all metric size copper pipe manufactured to BS2874 and compression fittings manufactured to BS864.
- Highly specified, carries the British Standard Kite Mark BS7291 Parts 1 and 2 to Class 'S' (the highest pass level available)

## COMPONENTS



Tees



Elbows



Adaptors



Stop Ends



Start Tap



Appliance Valve





## Plumbing & Drainage

### Ireland

24 Roughfort Road  
Mallusk, Co. Antrim  
Northern Ireland, BT36 4RB  
Tel: 028 9084 9999  
Fax: 028 9083 6666  
Sales Counter: 028 9084 8999  
Email: [sales@brettmartin.com](mailto:sales@brettmartin.com)

### England & Wales

Speedwell Ind. Estate  
Staveley, Derbyshire  
England S43 3JP  
Tel: 01246 280000  
Fax: 01246 280001  
Email: [building@brettmartin.com](mailto:building@brettmartin.com)

100 Camford Way  
Sundon Park  
Luton, Bedfordshire  
England, LU3 3AN  
Tel: 01246 280000  
Fax: 01246 280001  
Email: [building@brettmartin.com](mailto:building@brettmartin.com)

### Scotland

Blairlinn Road  
Cumbernauld, Glasgow  
Scotland, G67 2TF  
Tel: 01236 725536  
Fax: 01236 725871  
Email: [scotland@brettmartin.com](mailto:scotland@brettmartin.com)

For the latest company information  
visit the company's website:  
[www.brettmartin.com](http://www.brettmartin.com)

